

# 316 Stainless Steel Infiltrated with Bronze



ExOne's 3D Printed 316 Stainless Steel infiltrated with Bronze is a matrix material composed of 60% stainless steel and 40% bronze infiltrant. The lower yield strength of the material enables it to be easily machined and polished. This material also exhibits enhanced corrosion resistance properties.

## Applications

This material system has low magnetic properties which makes it particularly useful for applications in the food and medical industries. The copper alloy acts as a natural antibacterial agent making it easy to decontaminate printed parts. Since the matrix material is easy to polish, additional applications exist in bath and kitchen hardware prototypes and low volume production.



Printed part

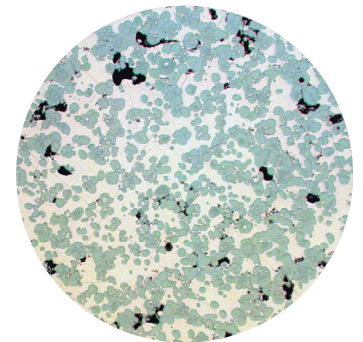
## Composition

Stainless Steel: Alloy 316

Bronze: 90% Cu / 10% Sn

## Printing

Using binder jetting technology, ExOne's state-of-the-art 3D Printing machines produce parts directly from 3D CAD models by precisely controlling the jetting of binder onto a powder bed, and then subsequently spreading new layers of powder. This process is repeated until the part is completed. This 3D Printing process offers increased design flexibility, reduced manufacturing cost and shortened lead times.



316 SS / Bronze

## Post Processing

After printing is complete, the parts are cured in an oven, which enables the parts to be handled. After curing, the parts are sintered and infiltrated with bronze above 1100°C. Cool down can be varied to control the machinability and hardness of the material.

## Typical Material Properties

Material Properties	Test Method	316SS / Bronze
Tensile Strength		
Ultimate Strength		84 ksi (580 MPa)
Yield Strength (0.2% offset)	ASTM E8	41 ksi (283 MPa)
Elastic Modulus		19.5 Mpsi (135 GPa)
Elongation		14.5%
Hardness	ASTM E18	60 HRB
Fractional Density		95%+ approximate
Density	MPIF 42	0.284 lbs/in <sup>3</sup> (7.86 gm/cm <sup>3</sup> )
Machinability		Conventionally machinable
Weldability		Use silicone bronze rod & TIG weld
Thermal Conductivity (Room Temp.)		11 BTU/hr ft <sup>2</sup> °F (19 W/m °K)
Specific Heat (at 600 °C)	ASTM E1269-11	0.131 BTU/lb °F (548 J/kg °K)
Thermal Expansion Coefficient at 600 °C	ASTM E831-14	10.37 x 10 <sup>-6</sup> / °F (18.6 x 10 <sup>-6</sup> / °K)

Note: Typical expected properties.

## Surface Finish

After sintering:    ≈ 600 μin R<sub>a</sub> (15 μm R<sub>a</sub>)  
 Bead blasting:    ≈ 300 μin R<sub>a</sub> (7.5 μm R<sub>a</sub>)  
 Barrel finishing:  ≈ 50 μin R<sub>a</sub> (1.25 μm R<sub>a</sub>)



After Sintering



Bead Blasting



Barrel Finishing

The data and other information (Information) presented in this Data Sheet are provided by and are proprietary information of The ExOne Company (ExOne). ExOne presents this Information in the good faith belief that it is substantially accurate as of the date provided on this document. The Information is based upon utilizing ExOne's 3D printing machines and proprietary processes and technology. The material properties included in the Information are representative of materials so processed and do not constitute minimum specification standards. Materials processed on machines other than ExOne's and/or with different processes and/or technology may differ as to their properties. ExOne's research and developments efforts are ongoing and ExOne reserves the right to revise the information at any time without notice. ExOne does not provide any warranties or other obligations hereby, and will only provide such warranties or other obligations, if any, either in a definitive purchase contract executed by ExOne or in its standard terms and conditions of sale contained in an order acknowledgement.

For information about ExOne® systems, materials and applications, contact an ExOne Production Service Center or visit [www.ExOne.com](http://www.ExOne.com).

**The ExOne Company**  
 127 Industry Boulevard  
 North Huntingdon, PA 15642

MIDWEST: +1 877 745 1580

EUROPE: +1 877 745 1580

MID-ATLANTIC: +1 877 773 9663

ASIA: +1 281 931 0011